



# Tua Marina School Newsletter

WWW.TUAMARINA.SCHOOL.NZ

26 AUGUST 2022

Kia ora e te whanau,

On behalf of the school community I would like to pass on our collective condolences to the whānau and friends of Neil Chalmers. Neil was the much loved Principal of Tua Marina School from February 1989 to July 2008.

Neil's funeral will be held in Nelson on Saturday. A number of Tua Marina and Blenheim friends and colleagues are keen to celebrate Neil's life but with the roads closed getting to Nelson is impossible. Because of this Neil's funeral will be live streamed on Saturday for everyone who can't make it. The funeral is at 2pm and the livestream becomes active 15 minutes prior to this.

There will be a few locals meeting at our school hall to join together and watch the live streaming, all are welcome.

Instructions are as follows:



#### INSTRUCTIONS FOR LIVESTREAM/WEBCAM

##### MARSDEN HOUSE

- Go to [www.marsdenhouse.co.nz](http://www.marsdenhouse.co.nz)
- Go to **Live Stream** on the menu tab
- Enter the password **Nelson** (case sensitive)

THE LIVE STREAM WILL COMMENCE 15 MINUTES PRIOR TO THE COMMENCEMENT OF THE SERVICE.

Continued on next page..

## IMPORTANT DATES

**Assembly**  
**2:30pm**  
Friday  
Sept 2nd

**Subway Day**  
Thursday  
Sept 8th

**Te wiki o Te Reo Maori**  
Sept 12 - 16

*Working together to grow a healthy and happy community where every learner succeeds. Me whakapau kaha.*

# Messages from Bradley



At Tua Marina School we use School Docs to help us manage the wide range of Policies and Procedures that we need to operate safely and effectively. Each term every school in New Zealand who uses SchoolDocs are asked to review the effectiveness and implementation of a selection of these policies and procedures. Over a three year cycle all of the policies and procedures will be reviewed. This term we are reviewing the following policies and procedures: **Child protection, Abuse and recognition and reporting, Care and Management of students, Supporting student wellbeing, Food and Nutrition, Sun protection, Staff wellbeing, Sun protection.** All members of the Tua Marina School community are welcome to participate in the review. If you would like to take part, please follow the instructions below.

## All reviewers

1. Visit the website <https://tuamarina.schooldocs.co.nz/1893.htm>
2. Enter the username (tuamarina) and password (community).
3. Follow the link to the relevant policy as listed.
4. Read the policy.
5. Click the Policy Review button at the top right-hand corner of the page.
6. Select the reviewer type.
7. Enter your name (optional).
8. Submit your ratings and comments.

If you don't have internet access, school office staff can provide you with printed copies of the policy and a review form.

## Masks

### Tua Marina School. Guidelines for mask wearing during weeks 5-10 of Term 3

During the first part of Term 3, we have continued to have a smattering of Covid cases in our school community, along with the usual Winter bugs that are impacting staff and students. (As I write this I am isolating as a household contact!)

Mask wearing when indoors continues to play an important role in minimising transmission of COVID-19 and winter illnesses, coupled with other layers of protection such as good hygiene and staying away from school and work when unwell.

Under the framework, when at Orange traffic light setting, masks must be worn by ākonga aged 12 and above on school and public transport. It is also strongly recommended by public health officials that face masks are worn by students and staff in years 4 to 13 when indoors.

At Tua Marina School we will continue to encourage and support our year 5-8 students to wear masks while indoors when appropriate and practical.

There are situations such as indoor physical activity, singing, dance and drama when wearing a mask is not practical and our staff and leadership team will make decisions about mask-wearing on a case-by-case basis. The school has a generous supply of masks for staff and students. We also have RATs that we can distribute.

Please call the office or contact your child's teacher if you require any tests to be sent home.



If you have any questions or feedback, please feel free to call the school, pop in or email me directly.

# Messages from Bradley



## Rapid Antigen Tests (RATs)

The school still has a supply of RATs that are available to our school community. If you would like a box send home please contact your child's teacher or the school office.

## General Winter wellness- General guidelines from the MoH and MoE

The Ministry of Health has confirmed that the guidance for returning to schools following vomiting or diarrhoea has not changed. If a child is free of those symptoms for 48 hours, they can attend school again. We have updated the winter wellness guidance for parents, caregivers and whānau to reflect the following points:

- If a child has been unwell with a respiratory illness other than COVID-19, they can return to school 24 hours after they have significantly improved and are behaving/ eating normally.
- Following vomiting or diarrhoea, a child should be symptom free for 48 hours before they can return.
- If they still have a runny nose or dry cough without any other symptoms such as a fever, vomiting or diarrhoea, then they are unlikely to be infectious and can be considered well enough to attend school.
- In general, a doctor's certificate or clearance should not have to be provided for a child to go back to school after being unwell.



To read our winter wellness advice go to:

[Winter wellness guide for tamariki \[DOCX, 22.0 KB\]](#)



## Generosity

Thank you to our incredibly generous school community for all of the items that have been donated for the Rai Valley Flood grocery collection. Jadey and Alice will have a big job packing all of the food up and distributing it to those who need it!

As always if you need to contact me please reach out at [principal@tuamarina.school.nz](mailto:principal@tuamarina.school.nz)

Ngā mihi nui,

Bradley



# CROSS COUNTRY



Congratulations to Annabel, Heath, Blake, Kayden, Bella and Quentin who represented Tua Marina School at the Marlborough Primary Schools Cross Country Champs last week! (Apologies to Annabel who must have been running so fast that we were unable to snap a photo of you as you went past). All of our runners put in 100% and Mr Roberts was so proud of how they represented Tua Marina School with integrity, respect and grittiness.

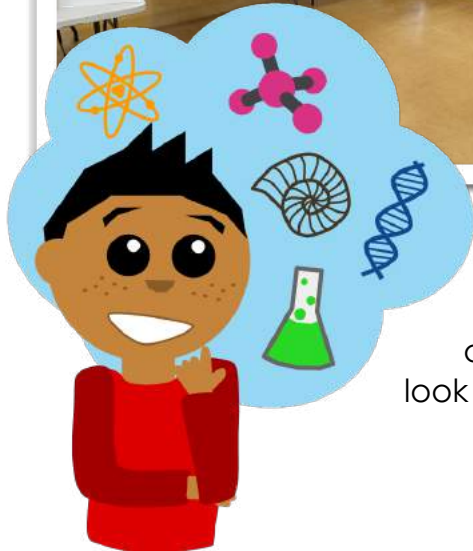
A special congratulations to Blake who came third in his race. We all know you were really in first place Blake! Blake has qualified for the Nelson / Marlborough champs a bit later in the year.



# SCIENCE FAIR



Well done to all of the classes, groups and individuals who took part in the 2022 Tua Marina School Science Fair. The topics covered were incredibly diverse and certainly highlighted the range of interests that our ākonga have about the world around them. It was also great to see our students thinking like scientists by engaging with science, gathering and interpreting data and asking great questions. A high number of the exhibits gained Gold and Silver awards and these



Next week our focus will turn from Science to Dance, Drama and Music as our new integrated unit of learning kicks off. We look forward to sharing and celebrating our learning with a concert near the end of next term.



# HOUSE POINTS

	WHEREO	KAHURANGI	KAKARIKI
Term One Totals	143	166	164
Term Two Totals	666	645	703
Values Hero week 1	29	16	33
Kiwican week 1	15	0	5
Kiwican week 2	10	0	10
Value Hero week 2,3	4	5	3
Kiwican week 3 & 4	15	10	15
Ākonga of week 2 & 4	15	30	25
<b>TOTAL</b>	897	872	958

## KIWI CAN CORNER



**THE KIWI CAN CORNER**  
Positive Relationships / Whakawhanaungatanga

**Cooperation**  
This week we're moving on to learning about cooperation. This will include exploring ideas about active listening, giving encouragement, and identifying the best ways to work together to achieve a group goal.

Why not talk at home about this?

- ★ How would you explain what 'cooperation' means to someone younger than you that doesn't know?
- ★ Would you say you are a cooperative person? Why do you say that?
- ★ What was a choice you've made recently you knew would be good for others?
- ★ What does it look like when a team is working well together? What about when it's not?
- ★ What are some ways we can cooperate with others in our community?

Follow @GraemeDingleFoundationMarlborough to stay up to date

**Positive Relationships**  
Whakawhanaungatanga  
Means working and playing in safe and thoughtful ways with others.

GRAEME DINGLE FOUNDATION

### Kiwi Can Winners Week 3

Ti Kouka - Pagan & Thor  
Makomako - Dean  
Rewarewa - Caitlyn



**THE KIWI CAN CORNER**  
Positive Relationships / Whakawhanaungatanga

**Cooperation**  
This week we're learning that to co-operate we have to be helpful and do our part. With older Kiwi Can kids we're also learning to compromise and reach an agreement.

Here are some conversation starters for this week:

- ★ What are some jobs you help out with at home? What impact does that have?
- ★ What are some ways you act cooperatively at school? How can being cooperative affect others around you?
- ★ Have you had to compromise on something this week? What happened? Why?
- ★ If you and someone else (like your sister/brother or a friend) want different things, what are some things you can say or do to help reach an agreement?

Follow @GraemeDingleFoundationMarlborough to stay up to date

**Positive Relationships**  
Whakawhanaungatanga  
Means working and playing in safe and thoughtful ways with others.

GRAEME DINGLE FOUNDATION

### Kiwi Can Winners Week 4

Ti Kouka - Manaia & Tamaki  
Makomako - Ajax  
Rewarewa - Lucas

# NOTICES

Blenheim Roller Skating Club

## Fundraising Disco

Come dressed as your favourite sports star

**2nd September // 5pm - 8pm**

Hire Skates \$5

Own Skates \$2

Helmets Compulsory

Shop and sausage sizzle available

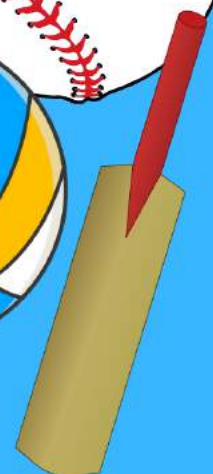
Cash sales only



**34 Stephenson Street**



Helping Erin  
get to the  
World Roller  
Games in  
Argentina



# NOTICES

Year 3-6 Come along and learn how to play Touch before the season starts

## INTRODUCTION TO TOUCH

Lansdowne Park  
Thursday September 15/22/29  
Year 3/4: 4:00-4:30  
Year 5/6: 4-4:45pm

Register at  
[www.sporty.co.nz/MarlboroughTouch](http://www.sporty.co.nz/MarlboroughTouch)  
on the Introduction to Touch link



### Marlborough Touch Junior Information 2022

Welcome to another season of Junior Touch.

#### Dates:

Junior Touch runs from Thursday 20th October to Thursday 8th December 2022

**Finals Day** will be held on Thursday, December 8th.

Due to the various school finishing times, I have made the decision to finish on Thursday December 8th. There will be the possibility of playing some finals the following week if schools are away on camp or have prizegiving on that day.

#### Grades:

Year 7 and 8  
Year 5 and 6  
Years 3 and 4

#### Game Times: 3:45pm, 4:15pm, 4:45pm, 5:15pm

Please let me know before the season starts if you have any requests for a particular game time. Reasonable requests are: if the coach has to finish work before a game or travelling teams. This also applies to Mayfield and Blenheim schools needing early games.

**Team Registrations:** Please log in to your school's SPORTY webpage and enter your teams through there. You are able to email all players from last year to re-register by going into last year's online Touch form and emailing all of the players. If you do not know your login or have any problems please contact me and I will help you. You can also send the link to parents and get them to register.

**Registration Fees:** \$120 per team. Approx \$12 per player. Todd Nicholas (Treasurer) will invoice all schools once I know the numbers of teams your school has.

**Ball Sizes:** Year 3 and 4 teams will play with a Size 3 Ball. These are perfect to teach correct grip and ball handling skills. All teams will be issued with a ball at the start of the season courtesy of the Rata Foundation  
Years 5-8 will play with a Size 4 Ball

## Girls Only Touch



Venue: Lansdowne Park  
Central Side

Thursday 27th October- Thursday December 1

Time: 5:45- 6:30pm  
Years 7-11

Format:  
Skills training  
Games of two 15 minute halves

Sign up at  
[www.sporty.co.nz/marlboroughtouch](http://www.sporty.co.nz/marlboroughtouch)  
Facebook: MarlboroughTouch  
Instagram: MarlboroughTouch

Prizes and giveaways  
Limited numbers so sign up today!



### Casual Positions at Giesen Winery

We are currently looking for hard-working individuals to join the Giesen team in some casual positions. Blenheim based with highly flexible casual working hours e.g., school hours

#### The tasks will include:

- Bottling of product
- Re-stacking of product
- Labelling items

This is ongoing work on a sporadic and casual basis, we are after reliable and punctual people to start as soon as possible.

If you are available immediately, want to join a great group of people and work flexible hours that meet your work life balance, and you fit the above criteria, we'd love to hear from you. Call 021 403 326 for more information or send your CV to [awesomejobs@giesengroup.co.nz](mailto:awesomejobs@giesengroup.co.nz)